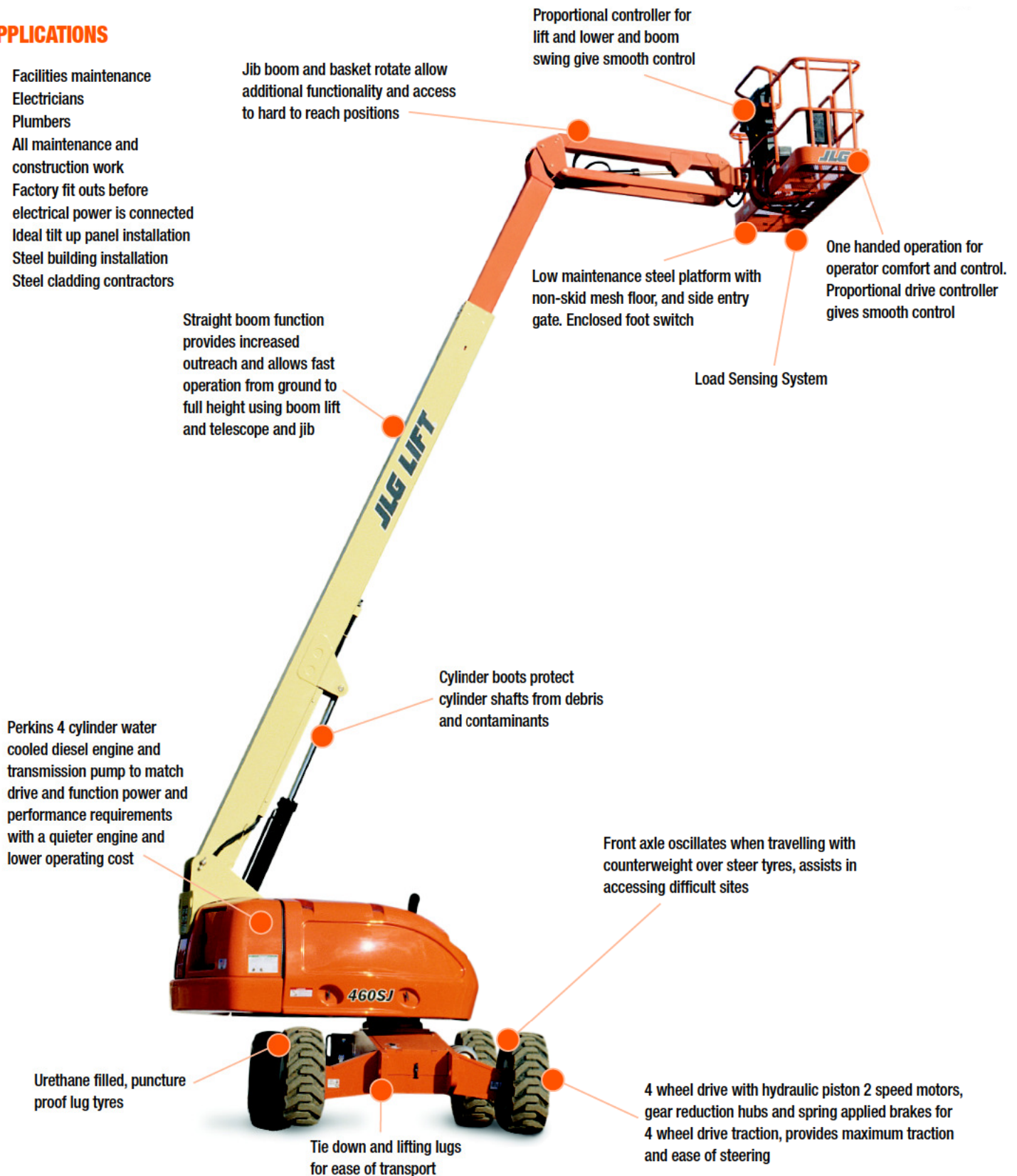


APPLICATIONS

- Facilities maintenance
- Electricians
- Plumbers
- All maintenance and construction work
- Factory fit outs before electrical power is connected
- Ideal tilt up panel installation
- Steel building installation
- Steel cladding contractors

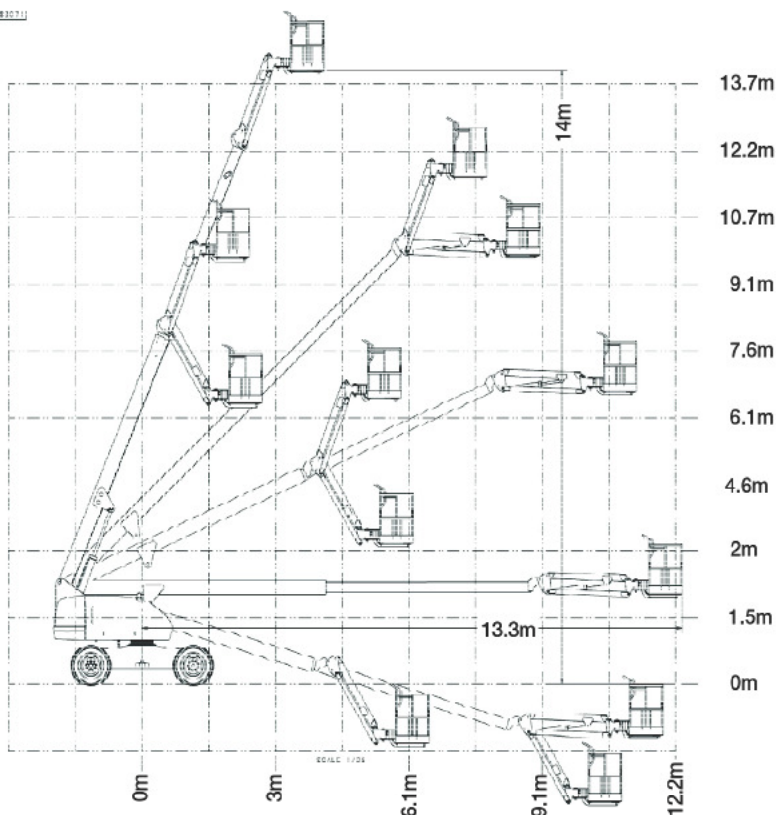


QUESTIONS TO ASK

- What are the ground conditions in the work area?
- What are the site conditions travelling around the site?
- What is the working height needed for the job?
- What is the outreach required for the job?
- Do you need an extension lead outlet in the platform?
- Will an inbuilt Miller 5.5kVA generator make the job easier?

KEY SELLING POINTS

- Smooth control, proportional hydraulic 4 wheel drive, with two speed ranges
- Proportional lift and swing controls at the platform
- Oscillating front steer axle with the boom within 10 degrees of centre, assists 4 wheel drive traction
- Jib boom and basket rotate
- Cylinder boots protect cylinder rods from overspray and contaminants
- Lug pattern urethane filled tyres
- Multi axis 4 degree level sensor
- Plug in JLG analyser at platform and base to indicate system functions for servicing and adjustment
- Perkins 404C-22 4 cylinder 2.216 litre diesel engine, 50HP/37kW @ 2800rpm, reduces noise, vibration, emissions and runs at a slower speed to reduce fuel use



SPECIFICATIONS

Performance:

Platform Height (max.)	14.02m
Working Height	16.02m
Platform Rotation Angle	180°
Jib Raise Angle	70°
Jib Lower Angle	60°
Jib Articulation Range	130°
Maximum Horizontal Outreach	12.34m
Lift Time	29 sec
Lower Time	22 sec
Platform Capacity	230kg
Slewing Angle	360°
Continuous Slew	Yes

Dimensions:

Stowed Length	8.84m
Stowed Height	2.39m
Overall Width	2.30m
Wheelbase	2.34m
Ground Clearance	0.32m
Platform Width	2.44m
Platform Length	0.91m
Overall Jib Length	1.83m
Tailswing	0.86m
Axle Oscillation Standard	Std

Power:

Power Source	Diesel
Engine Make	Perkins
Engine Model	404C-22
Engine Power	37kW
Genset	5.5kVA Miller
Auxiliary Power	12V

Travel:

Tyre Size	12 x 16.5
Tyre Type	Urethane Filled
Inside Turn Radius	2.01m
Outside Turn Radius	5.3m
Gradeability	45%
Drive Speed	7.2km/h
Maximum Ground Bearing Pressure	4.06kg/cm ²

Weights and Capabilities:

Fuel Tank Capacity	98.5 Ltr
Hydraulic Tank Capacity	159 Ltr
Operating Weight	7,930kg